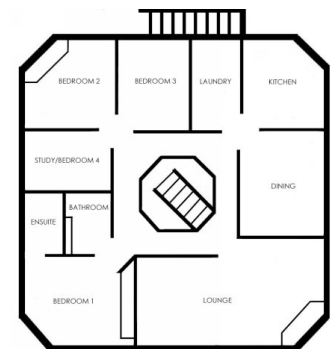


204 MONARO CRESCENT, RED HILL

Designed: by Robin Boyd, 1963

Built: 1964

Client: Mr and Mrs Will Graves Verge



The Verge House

The house was the first for the new firm Romberg and Boyd, following the departure of Roy Grounds. It is a combination of two styles: post-war Melbourne regional with flat, metal-deck roof and widely projecting eaves; and post-war international with its cubiform shape and large sheets of glass. It is of grey-brown Besser brick construction with internal limed timber walls and timber floors. Entry is through the ground-level double carports that form an enclosed, heavily shaded portico. The main stairway is positioned obliquely to the front door so as to rise toward the east corner of the main living level of the house. All rooms are arranged around the two-storey, octagonal central atrium and main stair landing. The octagonal concept, essentially a square with the edges snipped off, is carried through to the exterior with eight pillars of crenellated concrete block providing the main supports. The house is flanked by wide timber-lined eaves which are shaved back at the four corner pillars. The house is open both to the exterior and, through the glass interior walls, to itself.

Key points

- unusual combination of two styles: post-war Melbourne regional and post-war international
- listed on the RAIAs Register of Significant Twentieth Century Architecture
- the client was the grandson of leading colonial architect John Verge
- the design was inspired by a detail in John Verge's Elizabeth Bay House
- Boyd gave Verge a modern link to his forebear by designing an octagonal double-storey entry hall with central staircase leading to a gallery connected to all main rooms, topped by an octagonal skylight